

# GELFREE® 8100 8% Cartridge Kit

## Quick Reference Card

GELFREE® 8100

FRACTIONATION SYSTEM

Brief instructions are provided for use of the Gelfree 8100 8% Cartridge Kit with the Gelfree 8100 Fractionation System. This kit is designed for fractionation of proteins in the mass range 3.5 - 150 kDa, with optimized resolution at 35 - 150 kDa. For detailed operating instructions, refer to the Gelfree 8100 User Manual available at [www.proteindiscovery.com](http://www.proteindiscovery.com) or contact Technical Support.

<b>Before You Start</b>	! IMPORTANT The presence of low molecular weight contaminants, such as detergents, urea, and excessive salts, will negatively impact results. Before you start, be sure to fully desalt and remove any known contaminants. For effective removal of salts, we recommend the Fisher Scientific Desalting Columns (PI-89882).	
<b>Prepare Samples</b>	<u>Reagent</u>	<u>Volume</u>
	Desalted Sample	Up to 112 µL
	Acetate Sample Buffer (5X)	30 µL
	1M DTT Reducing Agent	8 µL
	Deionized Water	x µL
	Total Volume	150 µL
	Heat at 50°C for 10 min. <b>(Note: Excessive heating will cause degradation)</b>	
<b>Prepare Cartridge</b>	Replace Storage Buffer in the desired channels with HEPES Running Buffer (RB). Place 6 mL RB in the Cathode Reservoir, 8 mL in the Anode Reservoir, and 150 µL in the Collection Chamber.	
<b>Load Samples</b>	Remove any residual Running or Storage Buffer from the Sample Loading Chamber with a pipette. Add the entire 150 µL of prepared sample into the chamber.	
<b>Run Conditions</b>	Voltage:	50-100 V
	Run Time:	~2 hours
	Expected Current:	3-11 mA per channel



### REORDERING INFORMATION

(T) 865.521.7400 / (TF) 866.670.9038

(F) 865.521.3548

[sales@proteindiscovery.com](mailto:sales@proteindiscovery.com)

### DESCRIPTION

Gelfree 8100 8% Cartridge Kit

**PART NUMBER** 42103

# GELFREE® 8100 8% Cartridge Kit

## Quick Reference Card

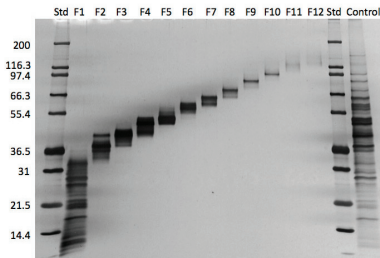
**GELFREE® 8100**  
FRACTIONATION SYSTEM

### Recommended Method

Step	1	2	3	4	5	6	7	8	9	10	11	12	13
Voltage (V)	50	50	50	50	50	100	100	100	100	100	100	100	100
Fraction Interval (min)	16	41.5	2	2	3	2	2	3	5	7	10	15	20
Total Elapsed Time (min)	16	57.5	59.5	61.5	64.5	66.5	68.5	71.5	76.5	83.5	93.5	108.5	128.5
Action/ Fraction #	Add RB*	1	Change RB/2	3	4	5	6	7	8	9	Change RB/10	11	12

\* At the first pause (completion of Step 1) add 2 mL of HEPES Running Buffer (RB) to the Cathode Reservoir, for a total of 8 mL. Wash the sample loading chamber thoroughly with Running Buffer.

### Expected Outcome



**Fractionation of *S. cerevisiae* using the Gelfree 8100 8% Cartridge Kit.** A 500 µg aliquot of yeast lysate was fractionated into 12 fractions ranging in molecular weight from 3.5 to 150 kDa. The fractions were visualized using 1D gel electrophoresis, followed by silver staining.

### TECHNICAL SUPPORT

418 S. Gay Street • Knoxville, TN 37902  
(T) 865.521.7400 / (TF) 866.670.9038  
(F) 865.521.3548 / support@proteindiscovery.com

